

IRELAND'S HOMES INTERIORS & LIVING

JULY 2026

Readers' homes in...

**CASTLEROCK, CLONAKILTY,
DUBLIN, KERRY, WATERFORD**

**MAKE A
SPLASH**
CONTEMPORARY
BATHROOM
DESIGN IDEAS

**GET THE
OUTDOOR
LOOK**
MAKE THE MOST OF
THE SEASON AHEAD

SUMMER STYLE

Ireland's largest selling interiors magazine for 31 years



Both Sides of a Story

Set within one of Dublin 6's handsome period streets, this home contrasts old and new perfectly. For interior designer Robert Glynn of Studio 31, the success of the project was about understanding where to let the architecture speak and where to introduce a more contemporary layer.

EDITORIAL BY EMMA DEIGHAN.



Scan this QR code to watch Robert Glynn walk us through the design and thinking process of this home's entryway.





Imposing is the perfect adjective for this home. There are wow moments from you enter until you exit, thanks to the careful curation of the property, a collaboration between homeowner and designer Robert Glynn.

'The property is a beautiful period home with strong architectural character and many original heritage features throughout,' Robert begins. 'It has wonderful ceiling heights, ornate detailing and elegant proportions, all of which gave the house a really timeless quality from the outset.'

The project was less about forcing modern into an old shell. Instead, the aim was to create balance. 'What was particularly important with this project was respecting the traditional architecture of the home while introducing a more contemporary layer through the interiors,' he explains. 'We wanted the spaces to feel luxurious and refined, but still warm, comfortable and very liveable.'

This was the second home Robert and the team at Studio 31 had designed for the clients, who had recently retired and were looking to create 'a beautifully designed forever home'.

'Somewhere that felt calm, elevated and enjoyable to live in day to day.'

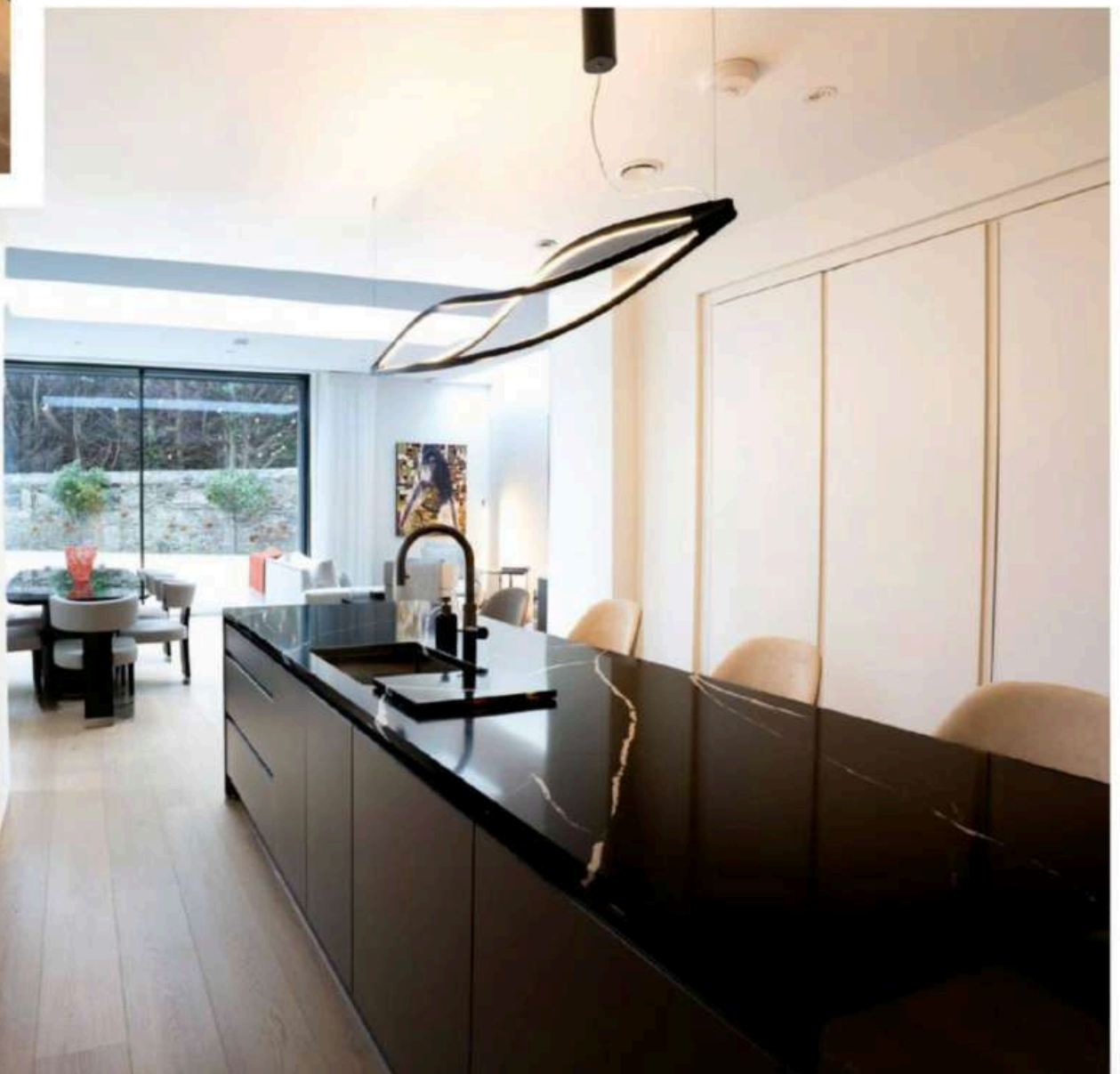
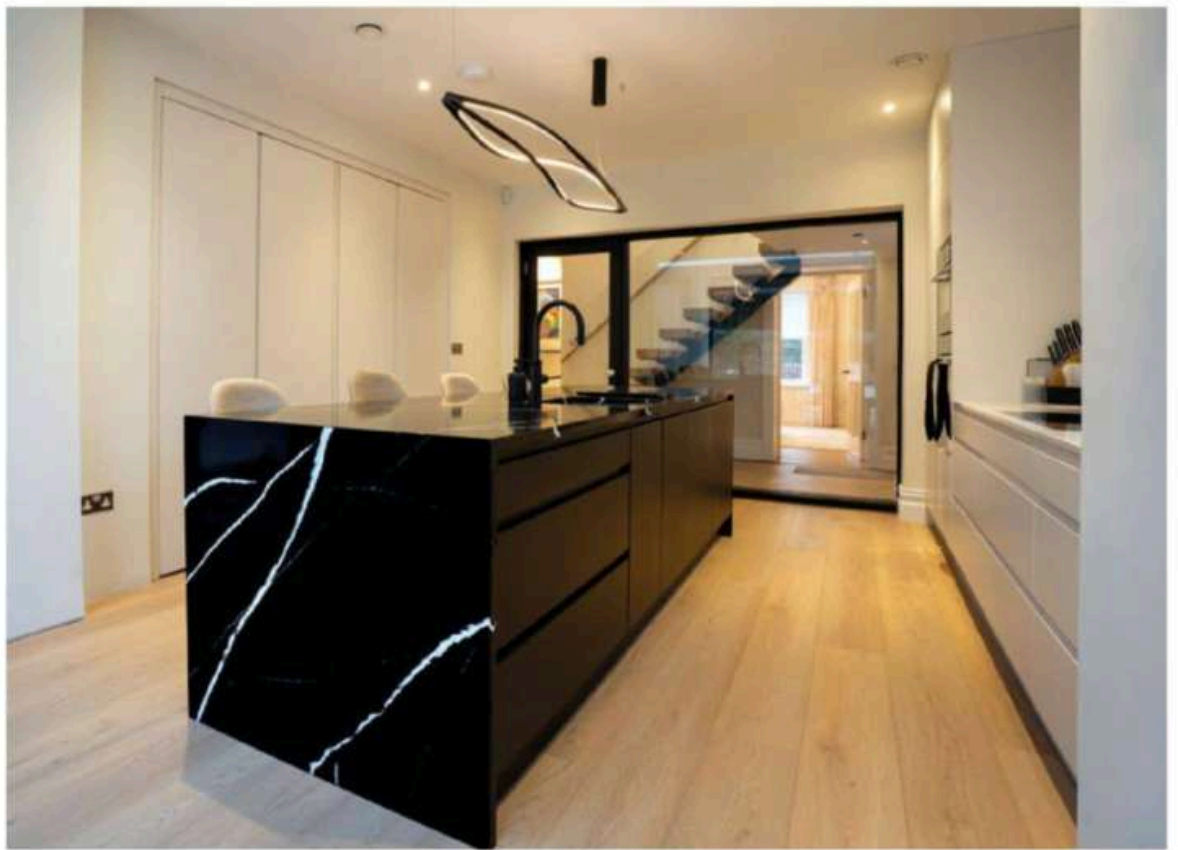
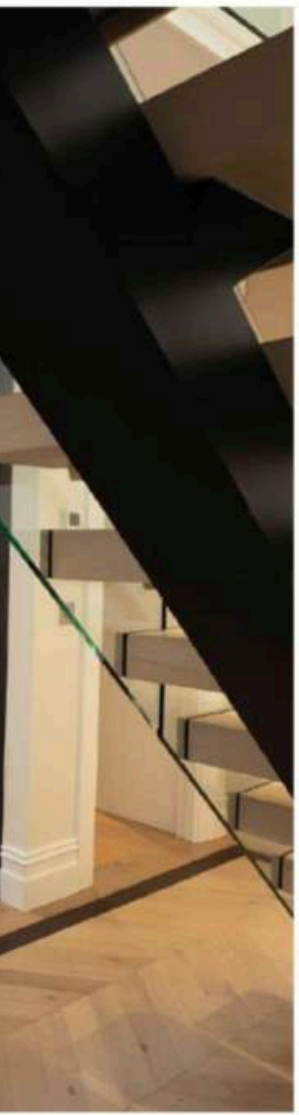
Robert continues, 'The house had fantastic bones architecturally, but a large amount of work was required to bring it to the standard and functionality the clients wanted. A lot of the finishes, lighting and internal detailing needed to be completely redesigned and modernised while still respecting the period character of the property.'

Layouts were reworked to improve how the house functioned, particularly in the transition between the formal front rooms and the newer extension to the rear.

'The clients wanted the house to feel elegant, timeless and highly considered, while still functioning practically for modern day living. They were very drawn to layered interiors with strong textures, beautiful lighting and a balance between traditional architecture and more contemporary furniture and finishes.'

That layering begins immediately in the entrance hall, where original proportions are paired with darker detailing, sculptural lighting and contemporary finishes.

'Because the property has such beautiful ceiling heights and original detailing, we really wanted to celebrate the architecture while introducing a more





contemporary feel through the finishes, furniture and lighting,' Robert says.

Flooring became a critical starting point for the scheme. Mountain Mist oak plank flooring was laid on a 45-degree angle, paired with a black double smoked 90mm border detail. 'This immediately adds elegance and formality to the space while also visually guiding you through the house,' he adds.

The floor treatment also solved a practical design issue. 'There is a turn in the hallway so this removes the issue with chevron or herringbone looking wrong,' he explains.

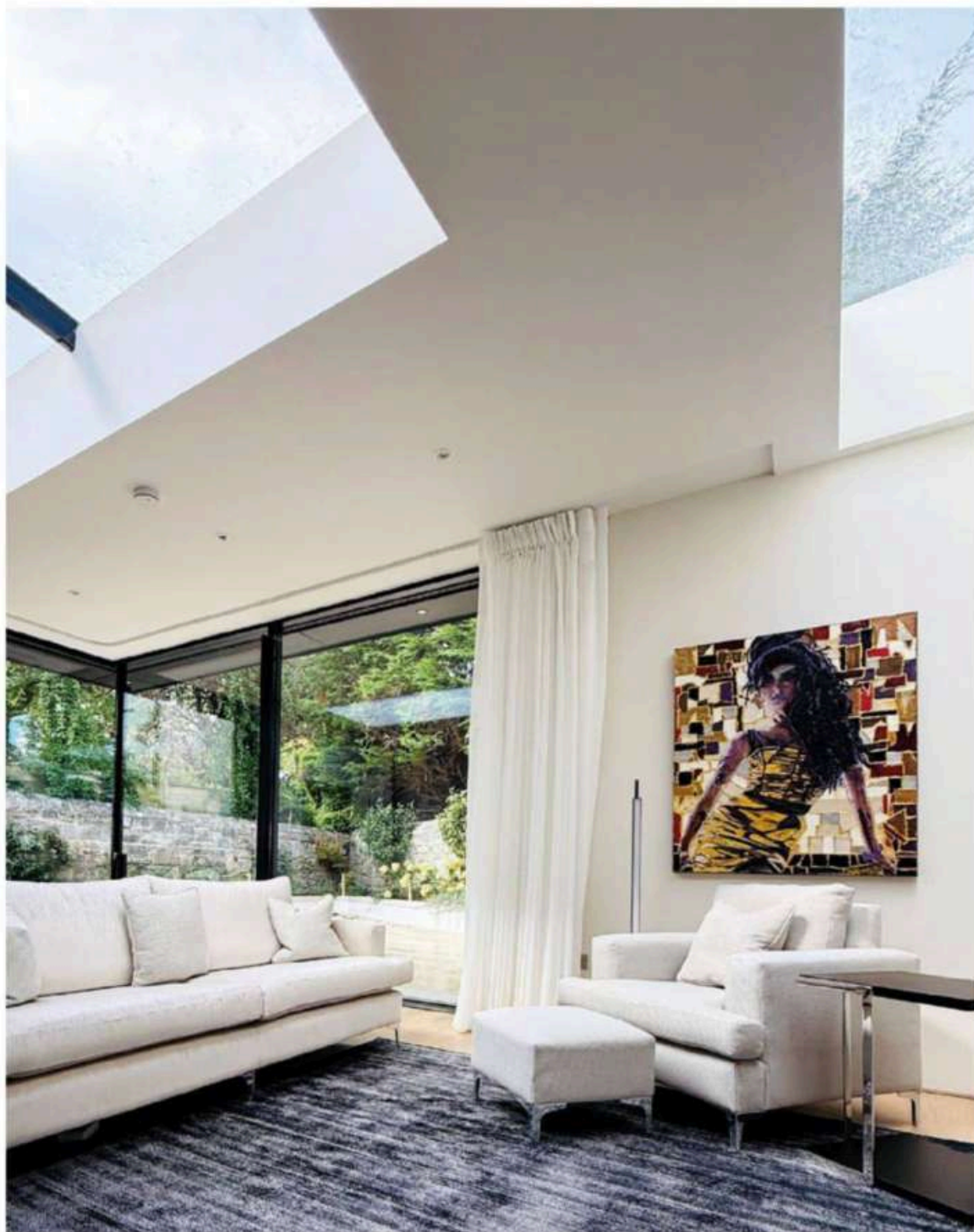
Throughout the hallway, the palette remains restrained. Walls are finished in Colortrend paints, while a textured navy wallpaper with warm gold and silver detailing from Casamance introduces depth without overwhelming the

architecture.

Lighting was approached architecturally rather than decoratively. 'We selected statement fittings that felt modern and sculptural, but still proportionally correct for the scale and architecture of the home,' he says. 'I generally favour larger fittings within period homes because they create a stronger sense of drama and proportion.'

The old and new continues into the living room and library, where the atmosphere shifts noticeably.

'The intention for the living room and library space was to create something moodier and more intimate,' Robert says. 'It's more of an evening room, somewhere the clients can sit, read a book, relax or simply watch the world go by outside.'



Walls are painted in Frozen Stream by Colortrend. 'The room still feels elegant and calm, but there's a much stronger sense of warmth and atmosphere compared to some of the lighter spaces elsewhere in the house,' Robert explains.

Custom joinery by IG Woodcraft became one of the defining features within the room. Detailed shelving and cabinetry were designed first before finishes and furnishings were layered into the scheme.

'The bespoke bookcases really helped define the character of the room,' says Robert. 'They frame the architecture while creating a warm and lived-in atmosphere.'

A sculptural fitting from Mullan Lighting is overhead, while lamps from Aromas Del Campo introduce softer

pools of light. Side tables and the desk were sourced from Stylish Club, while the rug came from Ligne Pure.

'A number of the furniture pieces were sourced from the same supplier used in the clients' previous home,' Robert says. 'That helped bring a sense of continuity and familiarity into the project.'

The kitchen marks a clear transition into something cleaner and more contemporary. Completed by IG Woodcraft, it was intentionally pared back. 'The kitchen was designed to feel much more contemporary compared to the more traditional front rooms of the house,' Robert says.

Part of that decision came down to scale. 'The kitchen space is not particularly large, so we wanted it to feel seamless, calm and visually uncluttered.'

He adds, 'We had to open up one of the walls to add



more kitchen units as initially the kitchen space wouldn't accommodate all the required appliances and storage.'

Cabinetry painted in Bonaire by Colortrend blends almost seamlessly into the walls, helping the room feel larger and calmer. The worktops were selected to create tonal contrast without disrupting the overall softness of the scheme.

'The main kitchen worktop is Dekton Halo,' Robert explains. 'It is fitted from countertop to ceiling and into the deep window reveals to add luxury and also bounce and reflect light.'

The island introduces a darker counterpoint through Silestone Et Noir. Coretec Egmont XL flooring was selected specifically to work alongside the Mountain Mist oak tones used elsewhere in the home.

'Throughout the kitchen we introduced black detailing selectively to tie into the staircase, glass partition and darker architectural accents used throughout the house,' says Robert.

The adjoining dining space continues that sculptural, architectural language. Dining furniture from Stylish Club introduces softer curves against the cleaner lines of the extension, while kitchen bar stools by Italian brand Midj reinforce the contemporary feel.

The rug was sourced from Jacaranda and wallpaper again from Casamance. Bespoke curtains, upholstery and cushions were custom-made as part of the wider interior scheme.

Artwork also became influential part of the design process. 'Before we began designing the spaces, the clients shared a selection of artwork they already owned and wanted to incorporate within the home. That actually became one of the starting points for several of the colour palettes and finishes used throughout the project.'

He adds, 'Artwork introduces personality and layering within a scheme,' he says. 'It brings warmth, individuality and visual balance.'

The staircase became another defining architectural

